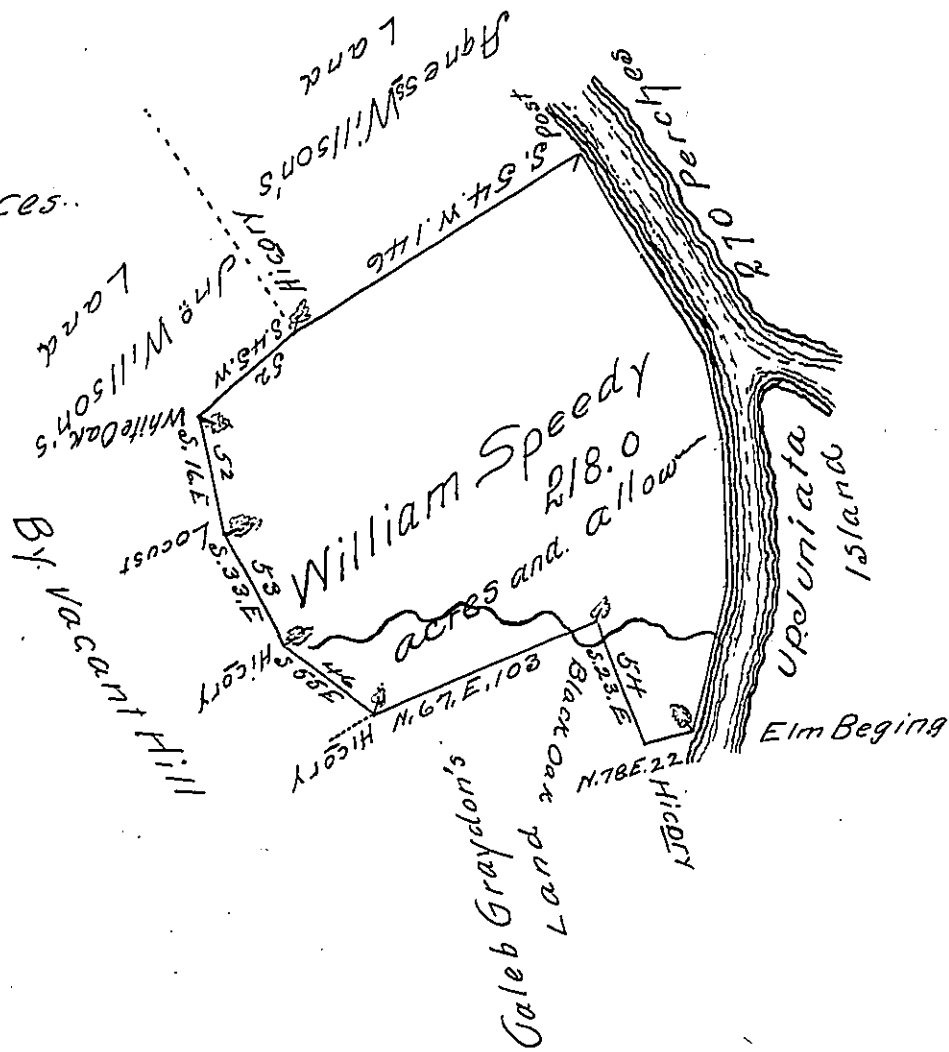


Courses & Distances
up Juniata

N 10 E	64
N 5 W	68
N 15 W	38
N 36 W	100
<hr/>	
	270



The Draught of a Tract of Land Called — situate on the South Side of Juniata—in the County of Cumberland containing Two Hundred Eighteen acres with the usual allow^{ce} of six acres p. Cent. for Roads, Survey'd the 6th day of July Anno Domi 1768. In Pursuance of an Order of Survey to William Speedy Bearing date at Philad^a the 4th day of August Anno Domi: 1767 and numbered 4262

p- W^m Maclay D.S.

To John Luxens Esq. S.G.
of Pennsylvania

IN TESTIMONY that the above is a copy of the original remaining on file in the Department of Internal Affairs of Pennsylvania, made conformably to an Act of Assembly approved the 16th day of February, 1833, I have hereunto set my Hand and caused the Seal of said Department to be affixed at Harrisburg, this fifteenth day of October 1904

Joseph P. Perry
Secretary of Internal Affairs.